

Foundation colour selection

Celebrity Colour matching for Bodyography's liquid Foundation

bodyography

PROFESSIONAL COSMETICS



#110 - Nicole Kidman



#110 - Marcia Cross



#120 Terri Hatcher



#120 Miley Cyrus



#120 Kim Cattrall



#125 Angelina Jolie



#130 Gwyneth Paltrow



#130 Reese Witherspoon



#140 Felicity Huffman



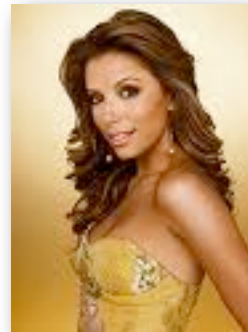
#140 Drew Barrymore



#150 Sarah Jessica Parker



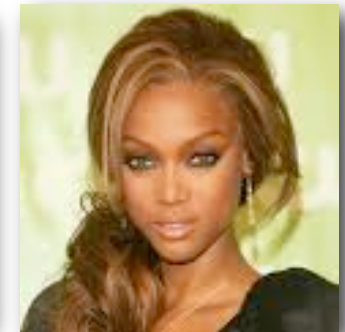
#160 Kristin Davis



#165 Eva Longoria



#210 Beyonce



#220 Tyra Banks

BODYOGRAPHY HAVE CREATED A CELEBRITY COMPARISON TO ASSIST YOU IN CHOOSING THE CORRECT SHADE FOR YOUR SKIN.

This does not imply that these celebrities use Bodyography unless stated otherwise in editorial.

WWW.BODYOGRAPHY.COM.AU